

## MDF and Oak Kitchen 1

Constructed from MDF with solid oak worktops



## MDF and Oak Kitchen 2

Kitchen units constructed from MDF and solid oak





**Spinning Wheel Cafe**  
**Steep Hill, Lincoln**

Bay window seats constructed from timber and MDF.

These photos show them before they were stained to match the wood panelling.





### **Pine kitchen**

Constructed from Quebec pine and finished with light oak stain and satin varnish





## Painted pine kitchen

Kitchen units constructed from timber, plywood and MDF and then painted.

The glazed dresser and the drawer units were made from recycled pine bedroom cupboards which were altered and modified by the addition of extra drawers and doors.





## Console Table

Mahogany console table with bookmatched flame mahogany top, concealed drawer, satinwood inlay and crossbanding.





### **Solid Oak Table**

Oak side table with carved oak leaf design drawer front





## Maple Firescreen

Firescreen made to hold an embroidered picture. Made in the style of a Japanese Torii arch, and constructed from solid maple with a fan motif inlay.





## Cherry and lacewood sideboard

Cherry sideboard with lacewood door panels and tambour.

Burr walnut inlay bandings around door panels and on top.

The drawers have lacewood fronts and walnut bead around the edges.

Lacewood is a highly figured veneer cut from the quarter sawn heartwood of the London Plane tree.



## CD cabinet

Pine CD/Video cabinet fitted with hinged opening storage compartments and adjustable internal shelves







## Bedroom Wardrobe

Fitted pine wardrobe with three doors and internal shelves and rails



## Wardrobe

Bedroom double wardrobe constructed from timber and MDF and fitted with manufactured sliding doors





## Double Wardrobe

Fitted double wardrobe with sapele doors. Internal shelves and drawers are made from MDF





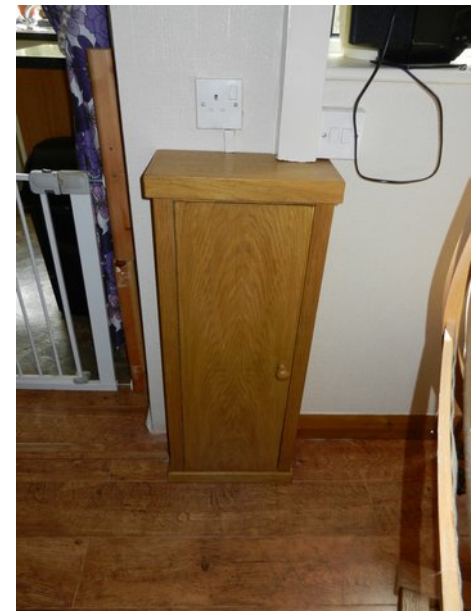
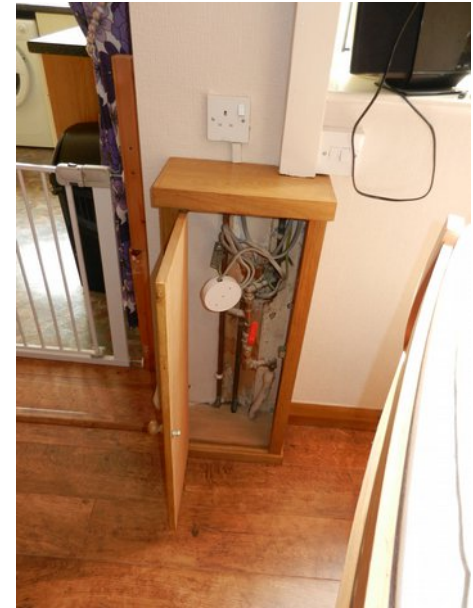
Alcove cupboards constructed from timber and MDF and later painted.





## Oak shelves and cupboard

Bookcase and display unit.



Cupboard around gas pipes and electrical wiring.

Painted MDF fireplace and alcove cupboards with solid oak mantelpiece and shelf







## Home office units

Painted MDF office units  
with solid pine worktop.



## Garage shelves

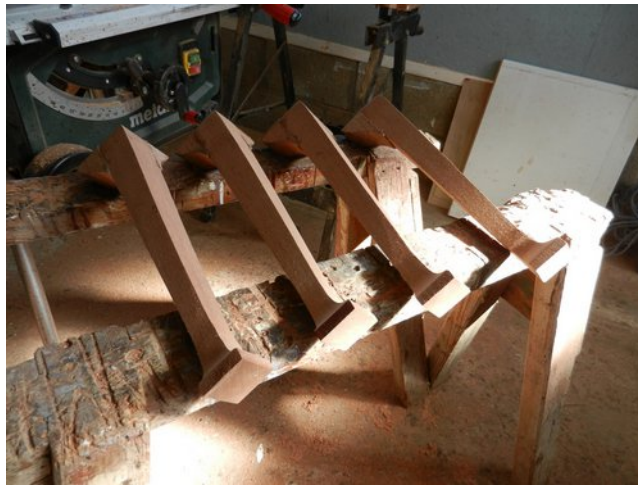
Constructed from timber and MDF







Carcase



Cabriole legs



Assembly



### Lowboy table

Table constructed from sapele with brass drop handles and painted antique white finish.





**Alcove cupboards and bookcases**  
Constructed from timber and plywood  
and painted white





## Pine Bed and Storage Units

Built in pine bed with sliding doors and storage space underneath.

Bookcase and shelf unit with integral storage box at the headboard end.

The wall unit was fitted with sliding doors and had further storage space on top and hanging pegs underneath.



## Steps and Toybox

Pine steps and storage box. This was made to act as a set of steps up to a raised cabin bed with all internal area of the unit containing storage compartments





## Pine shutters





## Garage 1

Garage constructed by building concrete block dwarf wall. Pre-fabricated wall panels were made from OSB board and CLS timber. A wall plate was fixed to the top of the blockwork and the panels screwed down onto this and into each other. Roof trusses were then fitted to brackets fastened to the top of the panels





## Garage 2

All wall panels and roof trusses are secured in place. Galvanized and powder coated steel roofing sheets are screwed down onto timber beams screwed to the roof trusses. Timber soffits and fascias fitted and the exterior of the garage is clad with waterproof fibre cement panels and shiplap timber cladding. Doors and window frames are constructed and fitted and finally the whole structure painted with exterior masonry paint, exterior woodstain and white gloss paint.





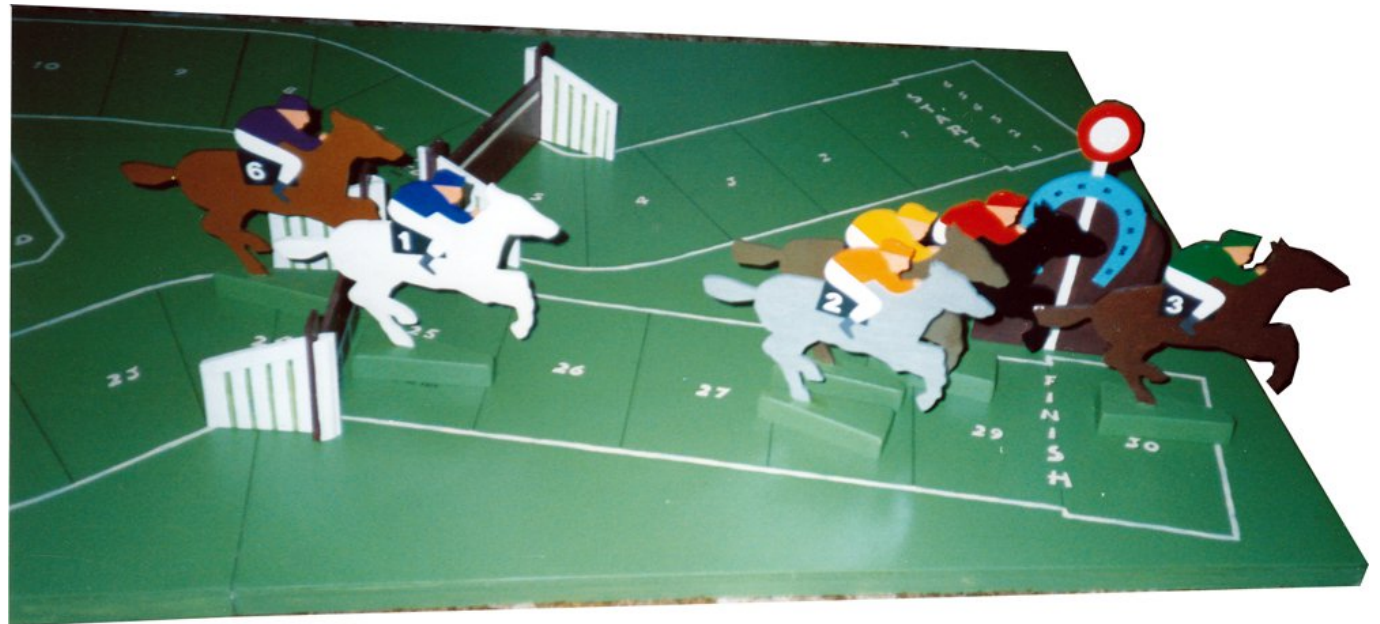
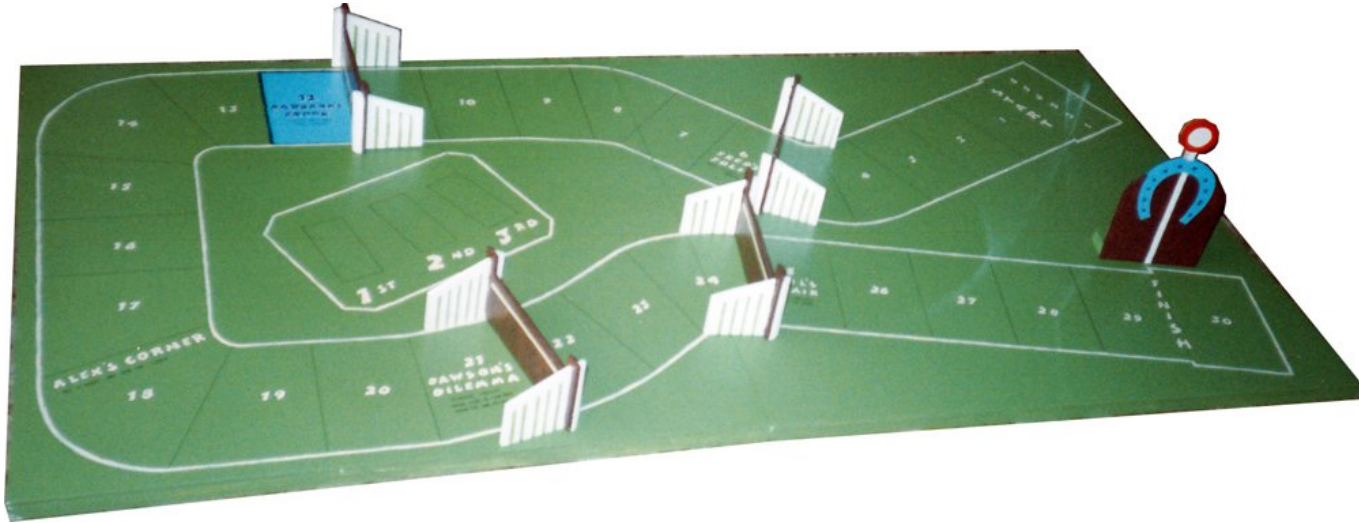
Garden cold frame made from softwood and stained with exterior garden wood stain





## Horse racing game

This was constructed from MDF and painted with racecourse design. It was made for the Fulford Arms in York.  
It was designed to sit on top of a pool table (same length and width) and fold away after use.

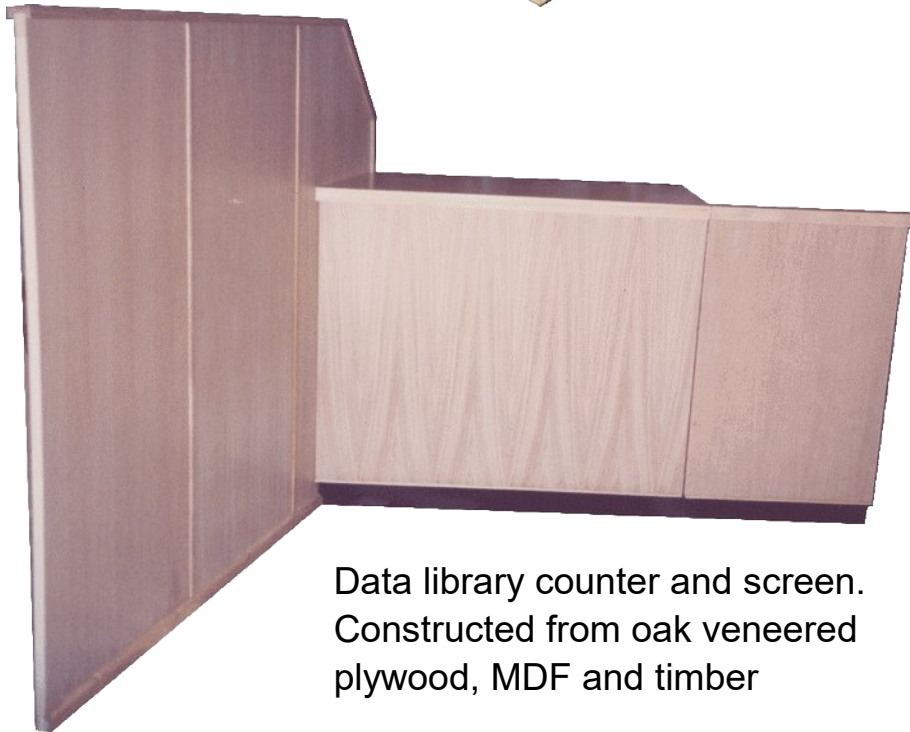
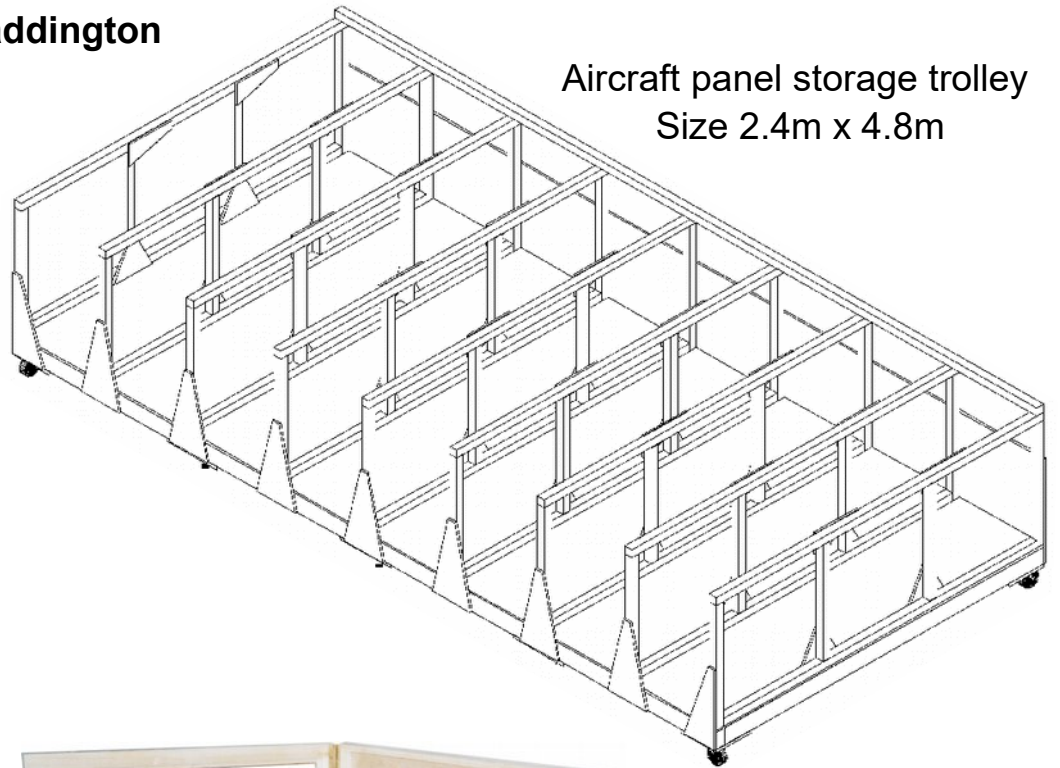


# Bespoke joinery projects for BAE Systems at RAF Waddington

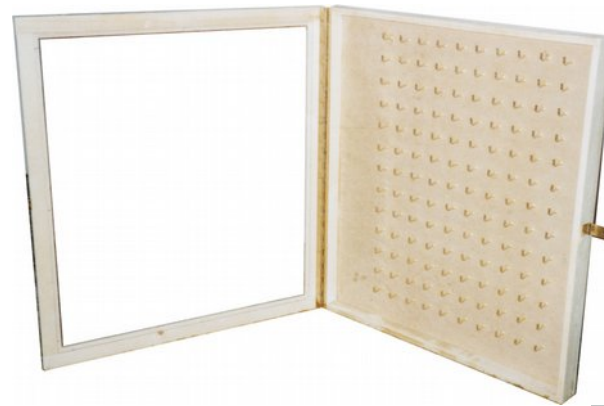
Aircraft component transport crate



Aircraft panel storage trolley  
Size 2.4m x 4.8m



Data library counter and screen.  
Constructed from oak veneered  
plywood, MDF and timber



Tool tag cabinet with  
glazed lockable door

